



Rosedale Tower

*1700 Highway 36 West
Roseville, MN 55113*

Suite Availability:

Suite 340

Suite Size: 371.0 RSF | Rate/SF: \$24.25/SF

Suite 490

Suite Size: 1,033.0 RSF | Rate/SF: \$23.00/SF

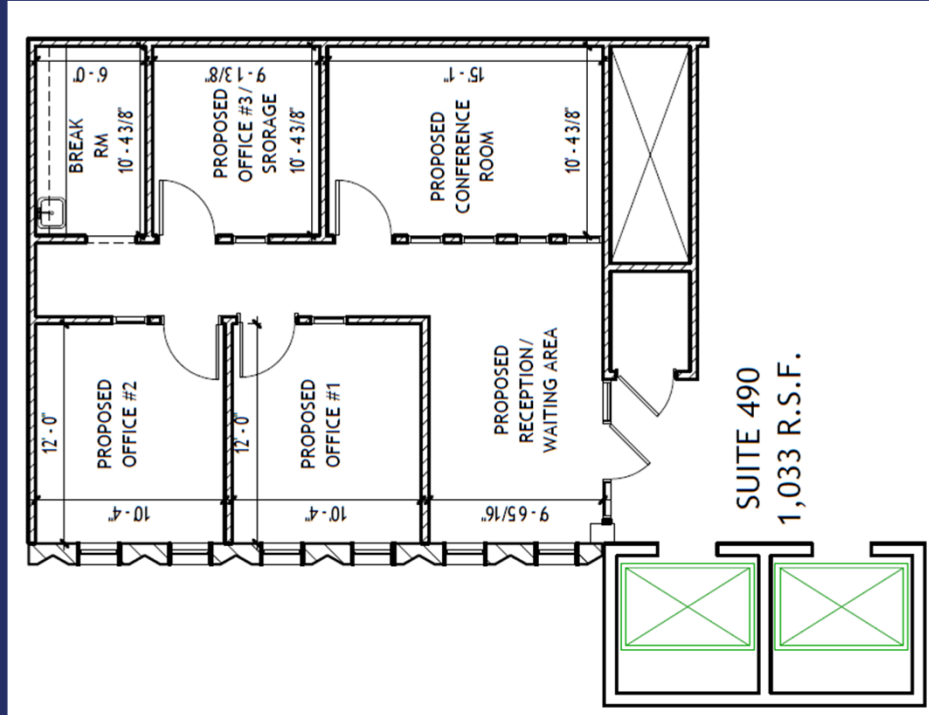
Suite 615

Suite Size: 541.0 RSF | Rate/SF: \$23.85/SF

Amenities

- Large Building Conference Room (35 People)
- Small Building Conference Room (12 People)
- Break Room and Vending Area
- Gazebo for Outdoor Dining
- Card Access System
- Great Access from Highways I-35W and 36
- Great Views of Downtown St. Paul & Minneapolis Skylines
- Tallest Building in the City of Roseville
- Building is Owner Occupied
- Adjacent to Rosedale Shopping Mall
- Abundant Parking

Suite 490



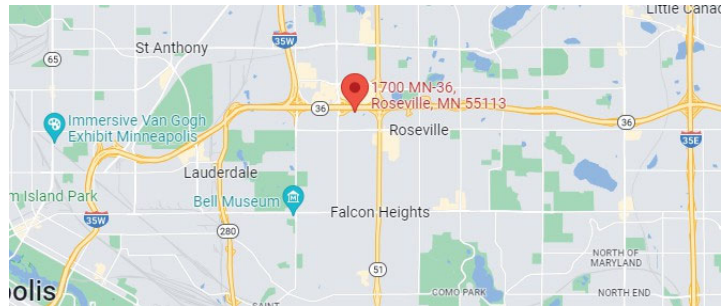
Suite Information:

Area - 1,033.0 RSF Rate/

SF - \$23.00/SF

Includes:

- Basic Utilities
- Cleaning (5-Days/Week)
- Maintenance
- On-Site Management
- Conference Rooms



Contact Us:

Beau Buchmayer

CELL: (651) 328.1354

beau@encompasspropertiesllc.com

Paul Buchmayer

CELL: (612) 269.2096

Licensed Real Estate Broker

Encompass Properties, LLC

paulb@encompasspropertiesllc.com

Office: (651) 361.8941

