



Hazelwood Professional Center

*2785 White Bear Avenue
Maplewood, MN 55109*

Suite Availability:

Suite 100

Suite Size: 1,157.0 RSF | Rate/SF: \$20.00/SF

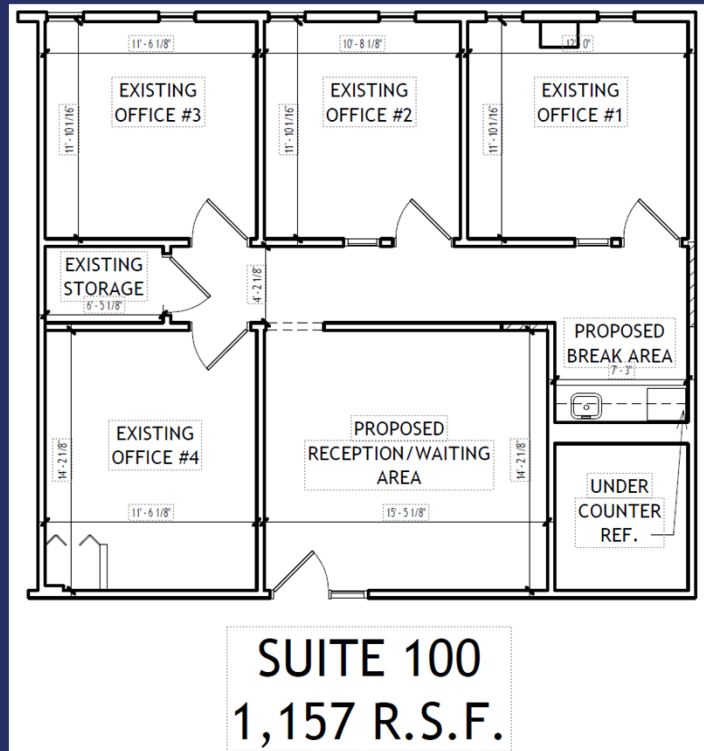
Suite 406

Suite Size: 550.0 RSF | Rate/SF: \$20.00/SF

Amenities:

- Conference Room
- Vending Area
- Outdoor Patio
- Great Access from Highways I-35W, 61, and 36
- Adjacent to Maplewood Shopping Mall
- Abundant Parking
- Card Access System
- Access to Public Transportation

Suite 100



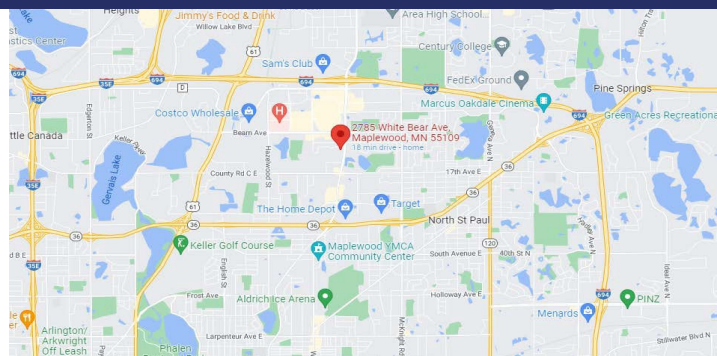
Suite Information:

Area – 1,157.0 RSF

Rate/SF - \$20.00/SF

Includes:

- Basic Utilities
- Cleaning (5-Days/Week)
- Maintenance
- Conference Room



Contact Us:

Beau Buchmayer

CELL: (651) 328.1354

beau@encompasspropertiesllc.com

Paul Buchmayer

CELL: (612) 269.2096

Licensed Real Estate Broker

Encompass Properties, LLC

paulb@encompasspropertiesllc.com

Office: (651) 361.8941