



Hazelwood Professional Center

*2785 White Bear Avenue
Maplewood, MN 55109*

Suite Availability:

Suite 101

Suite Size: 914.0 RSF | Rate/SF: \$20.00/SF

Suite 402

Suite Size: 1,111.0 RSF | Rate/SF: \$20.00/SF

Suite 404

Suite Size: 764.0 RSF | Rate/SF: \$20.00/SF

Suite 410

Suite Size: 1,450.0 RSF | Rate/SF: \$20.00/SF

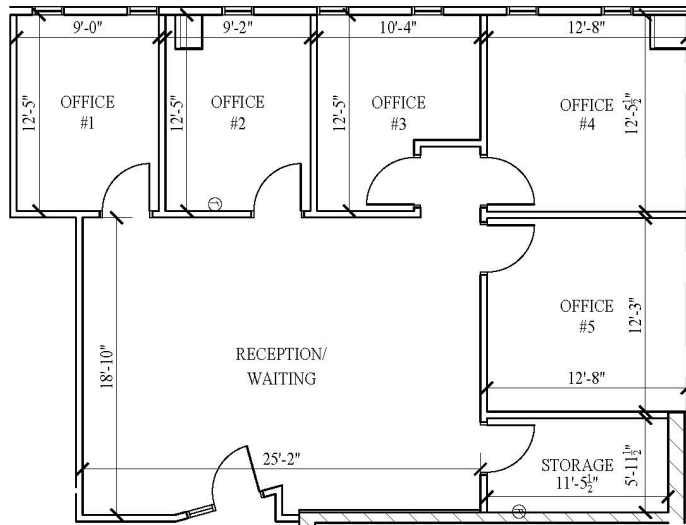
Suite 415

Suite Size: 1,812.0 RSF | Rate/SF: \$20.00/SF

Amenities:

- Conference Room
- Vending Area
- Outdoor Patio
- Great Access from Highways I-35W, 61, and 36
- Adjacent to Maplewood Shopping Mall
- Abundant Parking
- Card Access System
- Access to Public Transportation

Suite 410



SUITE 410
1,450 R.S.F.

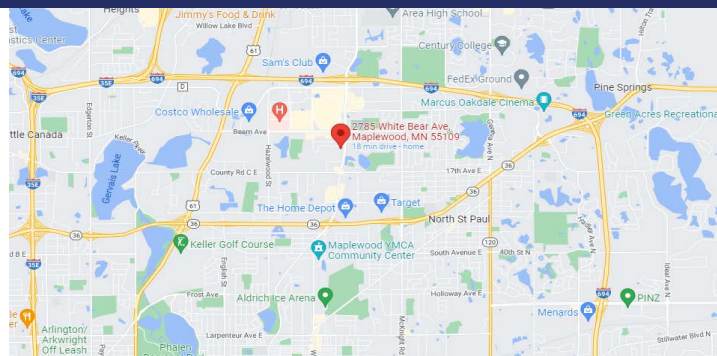
Suite Information:

Area - 1,450.0 RSF

Rate/SF - \$20.00/SF

Includes:

- Basic Utilities
- Cleaning (5-Days/Week)
- Maintenance
- Conference Room



Contact us:

Paul Buchmayer

Cell (612) 269-2096

Licensed Real Estate Broker -
Encompass Properties, LLC

paulb@encompasspropertiesllc.com

Office: 651-361-8941

