



# Hazelwood Professional Center

*2785 White Bear Avenue  
Maplewood, MN 55109*

## Suite Availability:

### Suite 101

Suite Size: 914.0 RSF | Rate/SF: \$20.00/SF

### Suite 402

Suite Size: 1,111.0 RSF | Rate/SF: \$20.00/SF

### Suite 404

Suite Size: 764.0 RSF | Rate/SF: \$20.00/SF

### Suite 410

Suite Size: 1,450.0 RSF | Rate/SF: \$20.00/SF

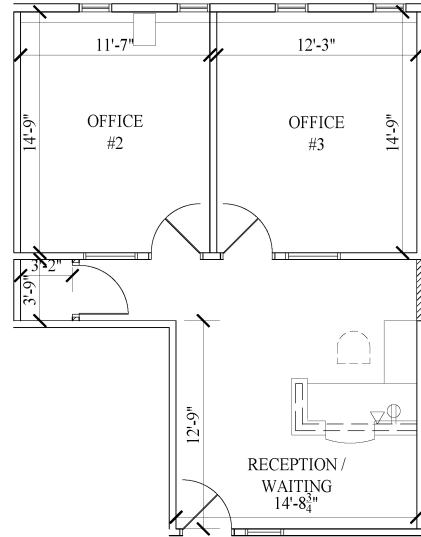
### Suite 415

Suite Size: 1,812.0 RSF | Rate/SF: \$20.00/SF

## Amenities:

- Conference Room
- Vending Area
- Outdoor Patio
- Great Access from Highways I-35W, 61, and 36
- Adjacent to Maplewood Shopping Mall
- Abundant Parking
- Card Access System
- Access to Public Transportation

# Suite 404



SUITE 404  
764 R.S.F.

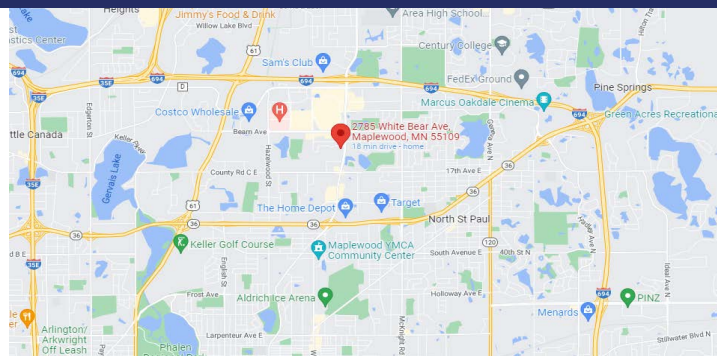
## Suite Information:

Area - 764.0 RSF

Rate/SF - \$20.00/SF

### Includes:

- Basic Utilities
- Cleaning (5-Days/Week)
- Maintenance
- Conference Room



## Contact us:

Paul Buchmayer

Cell (612) 269-2096

Licensed Real Estate Broker -  
Encompass Properties, LLC

[paulb@encompasspropertiesllc.com](mailto:paulb@encompasspropertiesllc.com)

Office: 651-361-8941